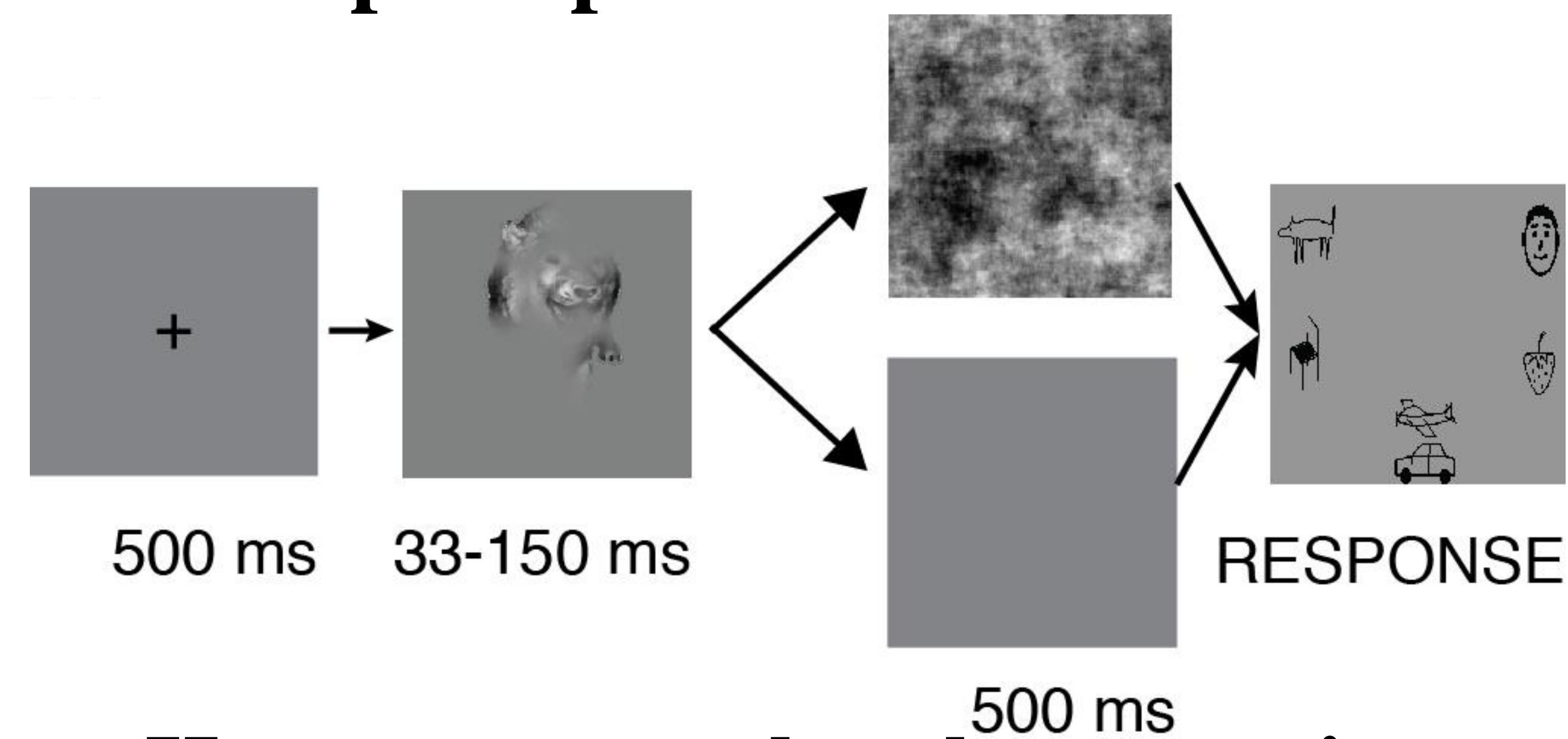


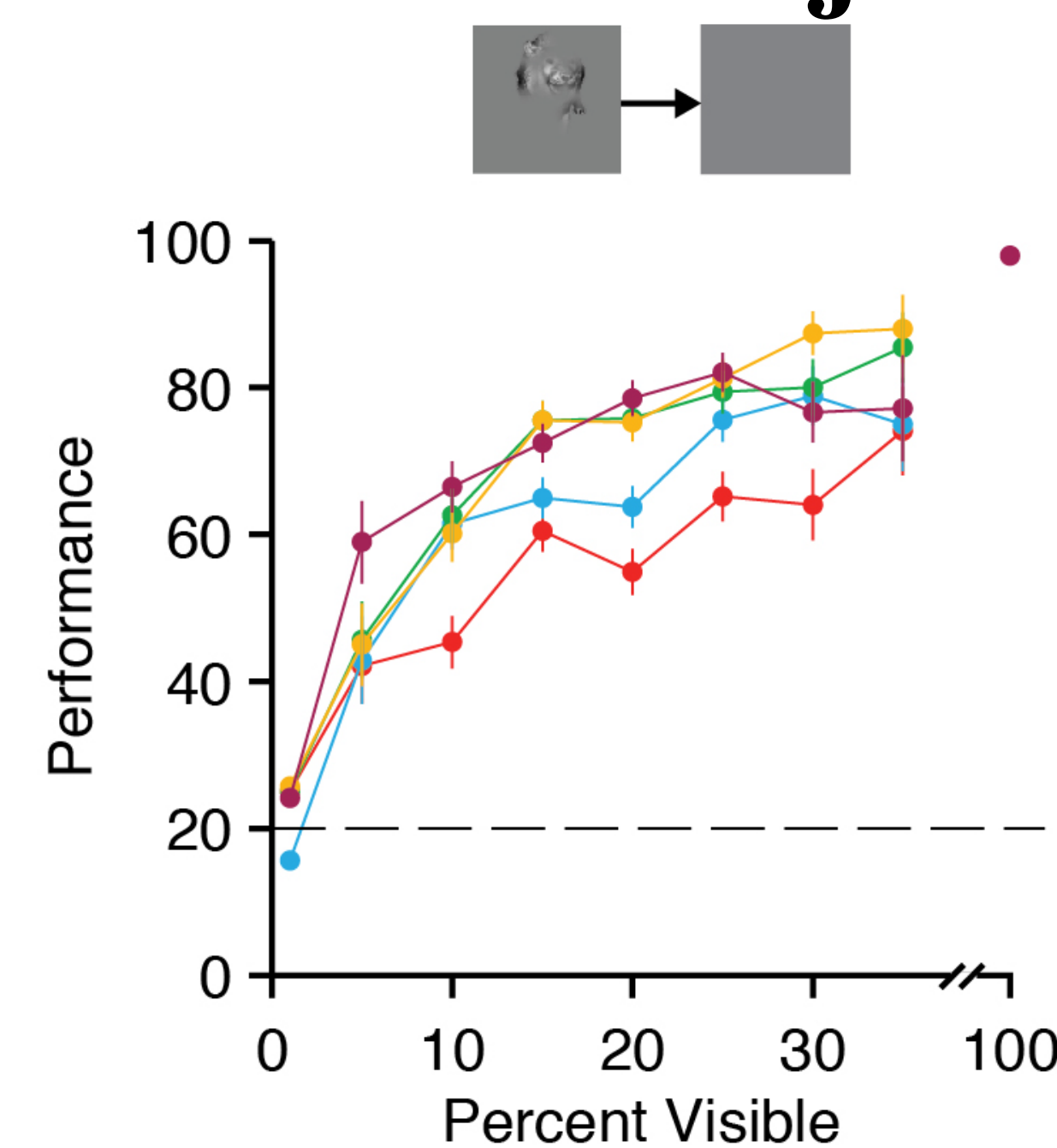
Recurrent Computations for Pattern Completion

Behavior

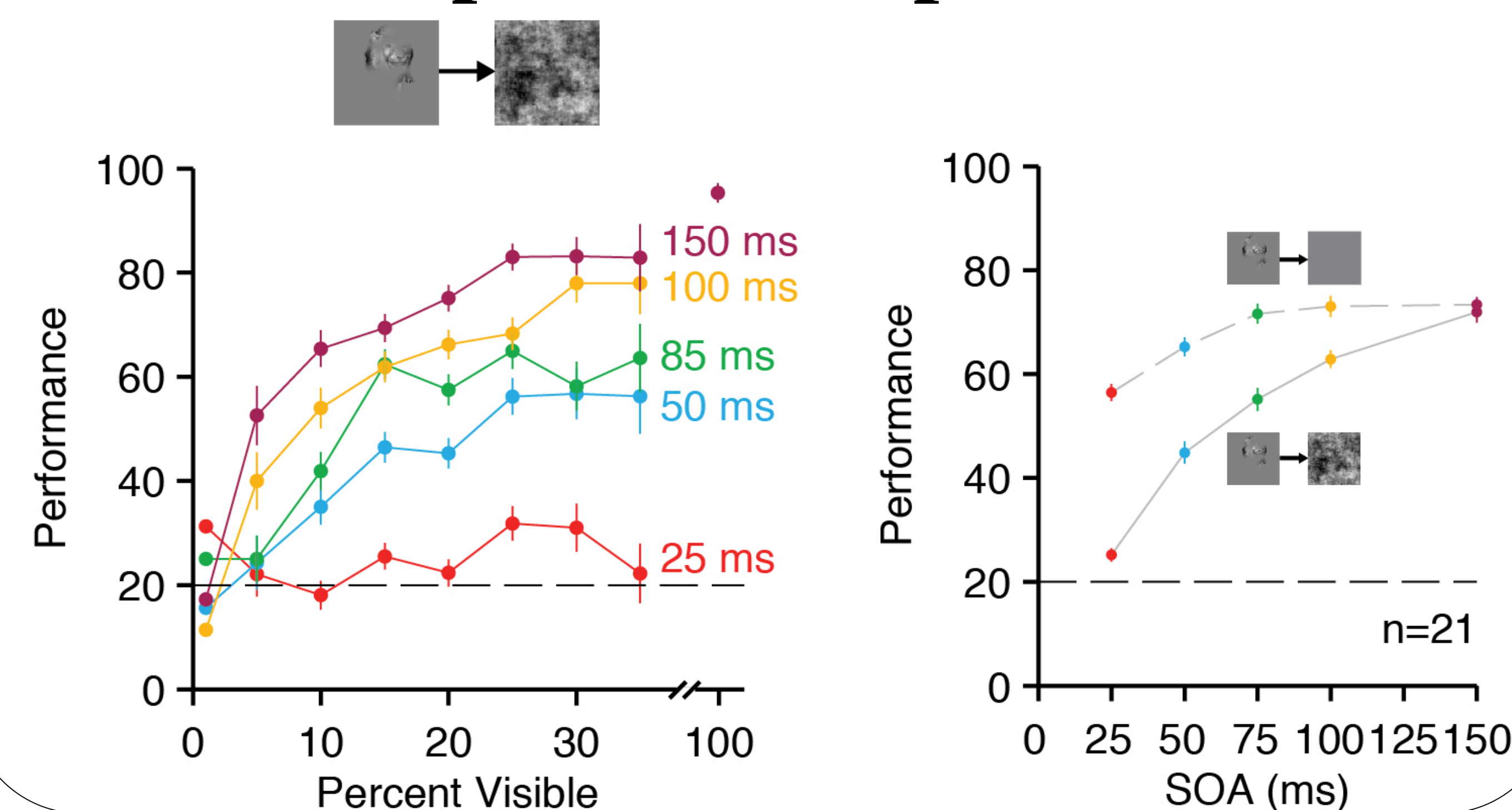
Q: How is the human brain able to complete partial information?



Humans can robustly recognize occluded objects

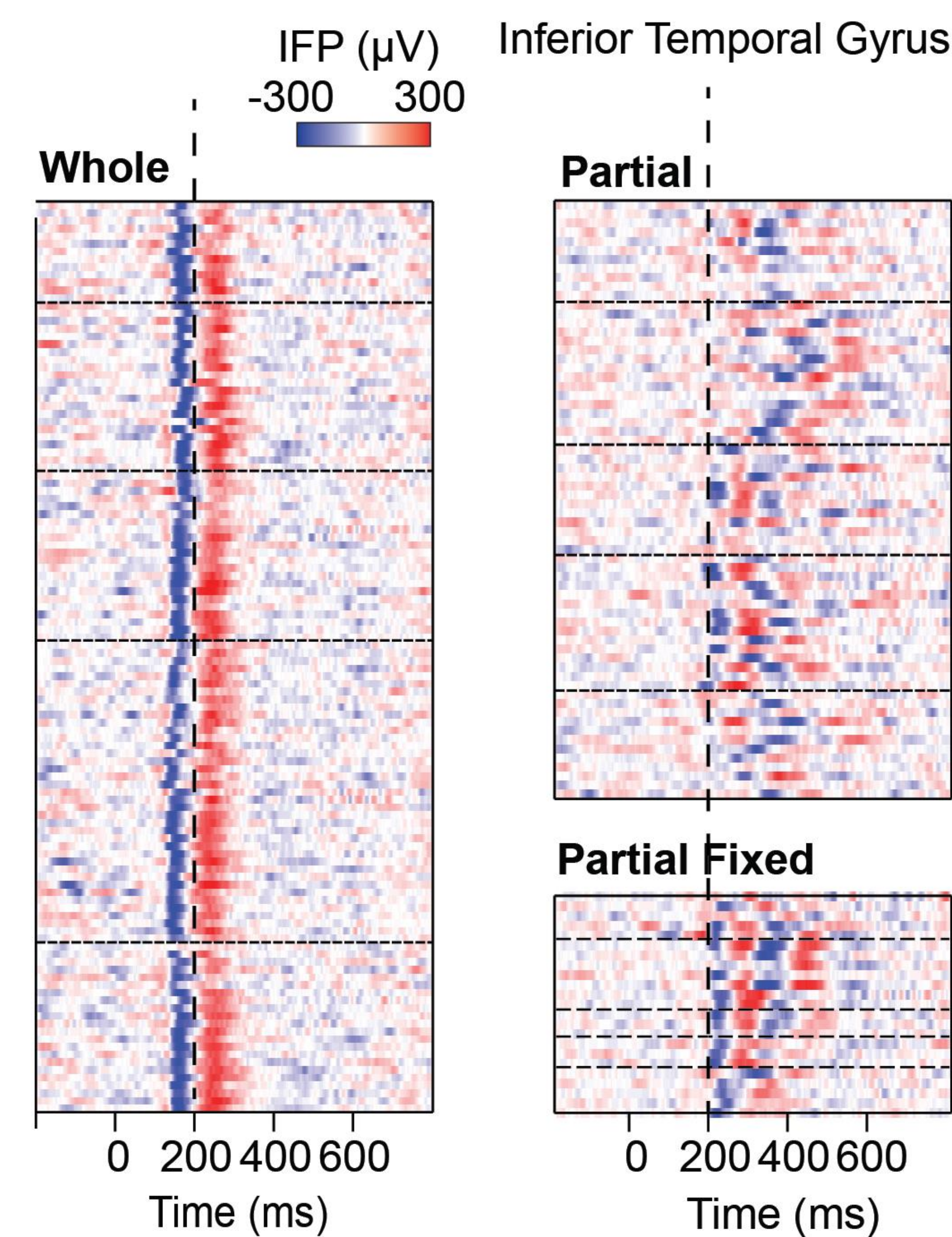
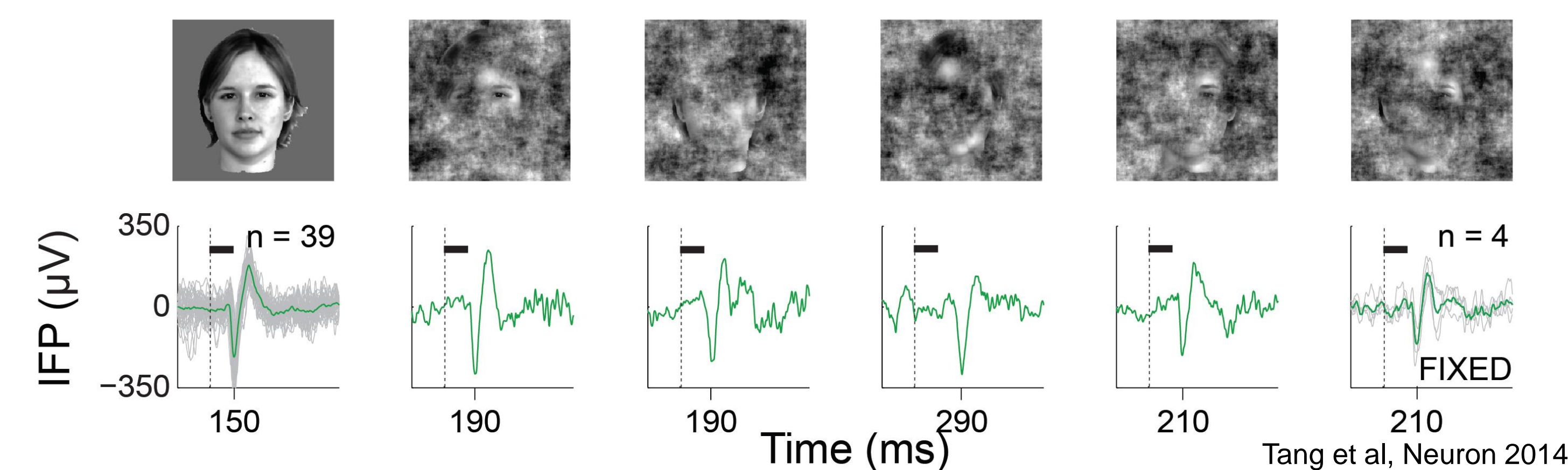


Backward Masking disrupts pattern completion

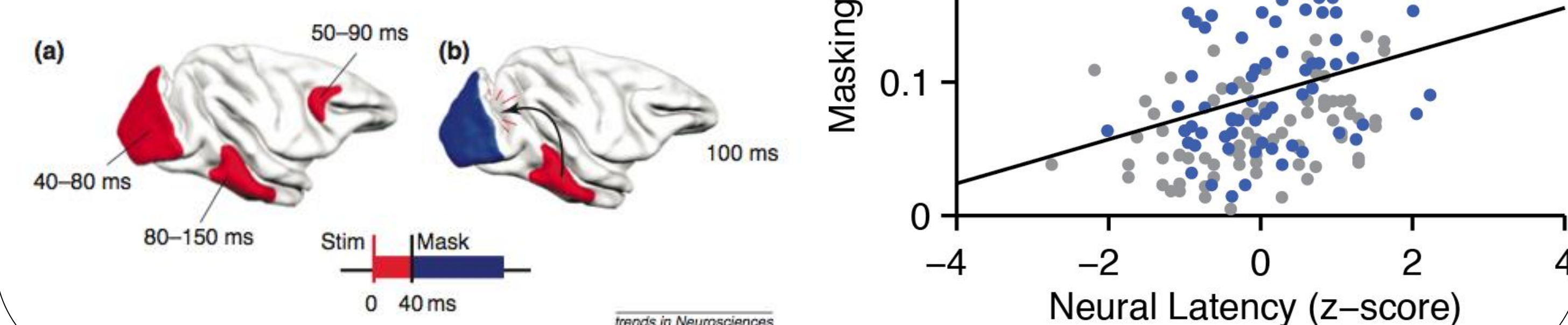


Neurophysiology

Responses to occluded images are delayed

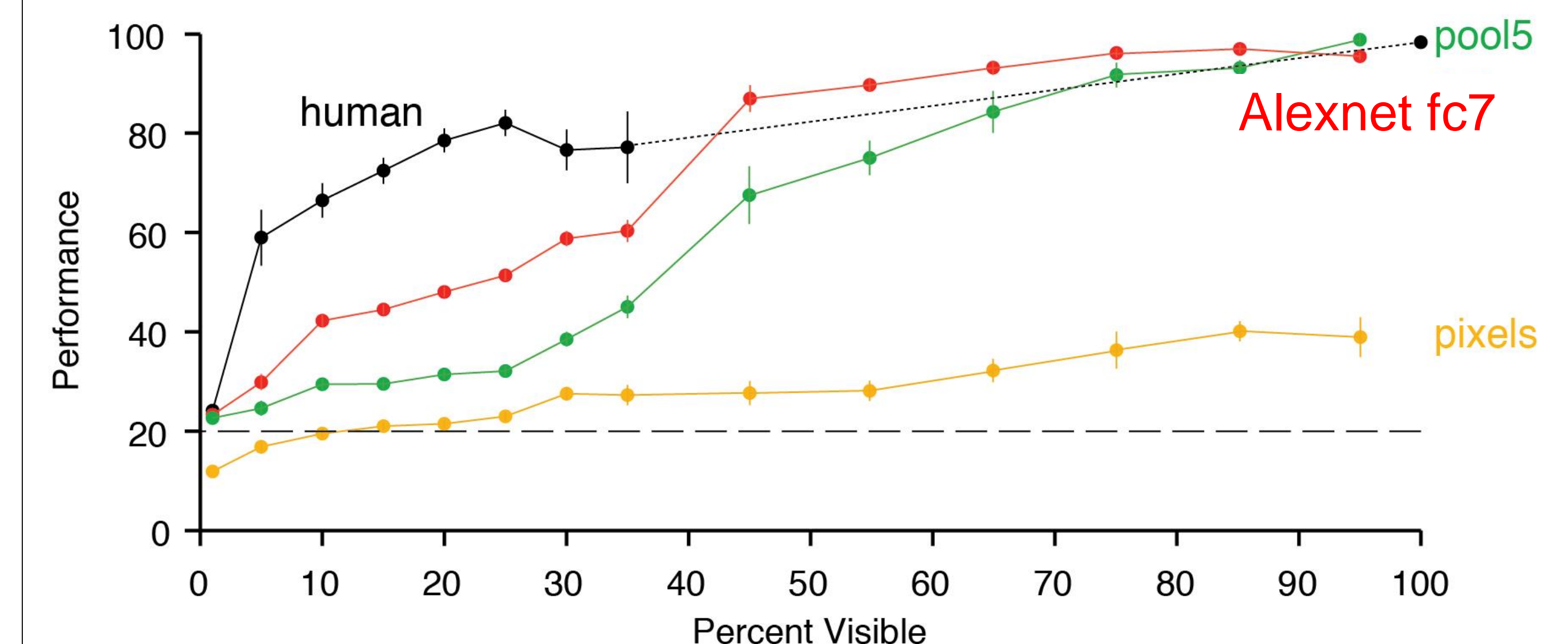


The effect of masking correlates with neural delays

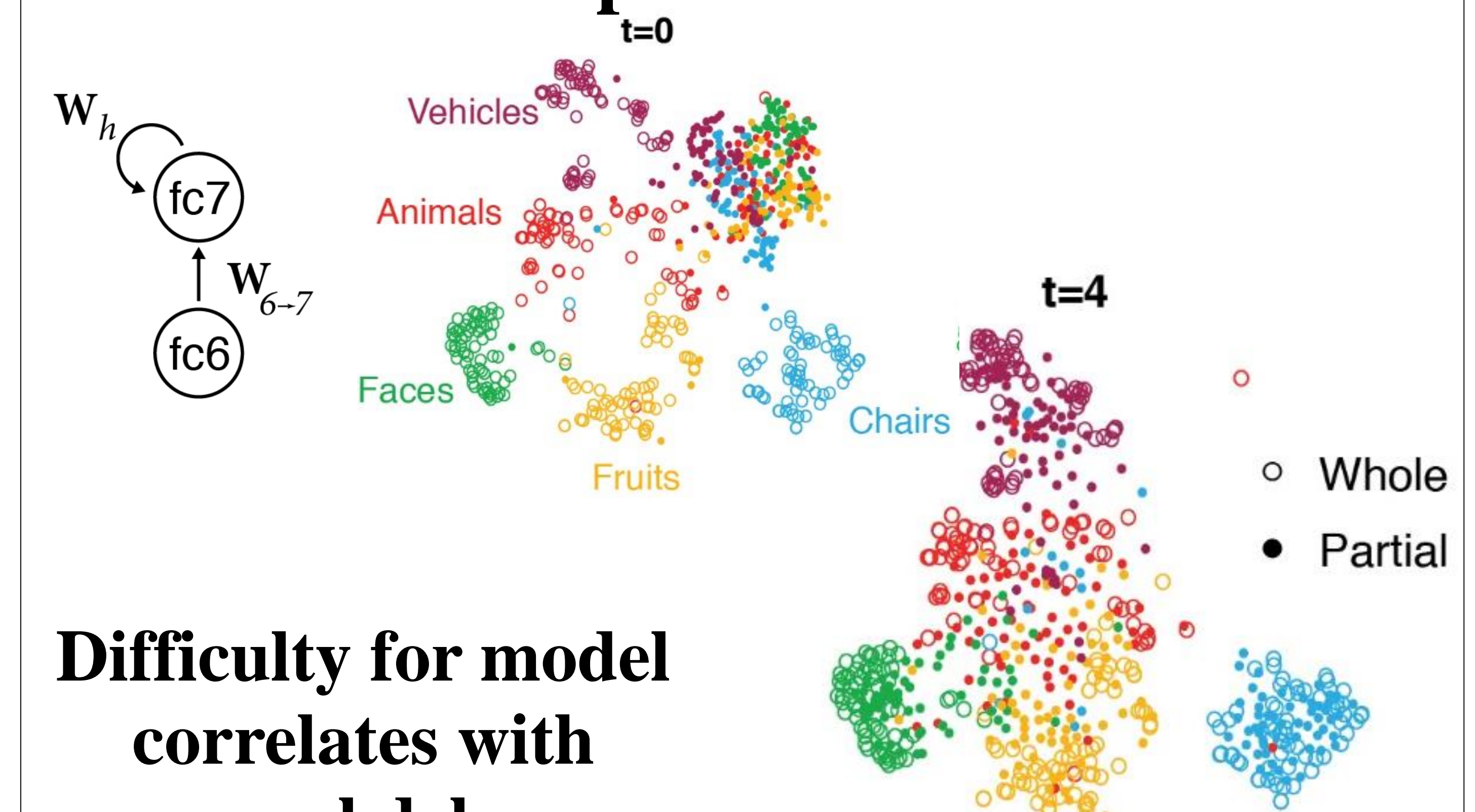


Computational

Feed-forward models are not robust in the recognition of partial images



Attractor-based recurrent computations significantly improve representations and performance



Difficulty for model correlates with neural delays

